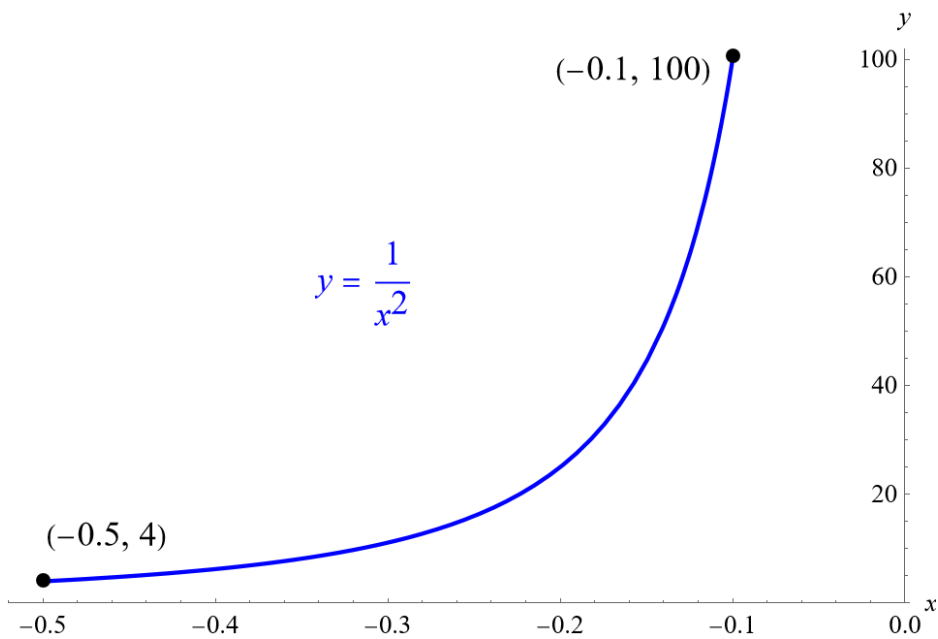


## Exercise 55

Graph  $y = \frac{1}{x^2}$  on the viewing window  $[-0.5, -0.1]$  and  $[0.1, 0.5]$ . Determine the corresponding range for the viewing window. Show the graphs.

### Solution

For  $-0.5 \leq x \leq -0.1$ , the range is  $[4, 100]$ .



For  $0.1 \leq x \leq 0.5$ , the range is  $[4, 100]$ .

